

# Adobe Photoshop 7.0

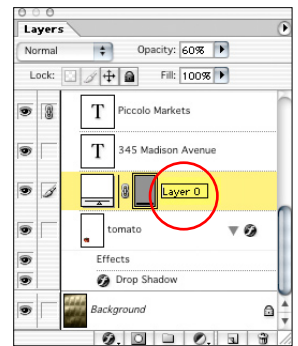
But wait, there's more! - by Julieanne Kost



So by now, you've probably heard all about the major features of Photoshop 7.0. You've been awed by the Healing Brush and Patch tool, impressed with the File Browser and Painting engine, thrilled with the enhancements to Liquify and the ability to easily create seamless pattern with the Pattern Maker. Not to mention the ability to define tool presets and workspaces, automatically correct color and publish images to both print and web with terrific ease. You're no doubt speechless.

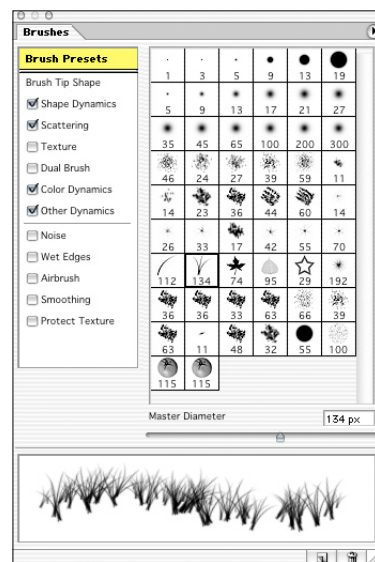
Well, the reality is that, as with any new version of Photoshop, there are far more features than you'll find on the box. You just KNOW the Photoshop engineers have adjusted and tweaked, honed and shuffled. But wait, how can you possibly learn them all before your next major deadline? Simple. We've put together the top tips to make the transition from Photoshop 6.0 to Photoshop 7.0 as easy as possible. Specifically, the things you use the most often that will not necessarily make you jump out of your seat, but just make you smile. So let's take the insiders look at all of the enhancements that didn't make the front page, but will make a dramatic difference in your workflow. Some are obvious, but others are more subtle. Others are so smooth, you might miss them.

**Renaming a layer** We heard you loud and clear. Renaming layers in 6.0 wasn't as easy as it used to be. Well, I think we've finally reached a solution that will work for everyone! In Photoshop 7 you can rename a layer (or layer set) by simply double clicking on the layer name in the Layers palette and typing - right on screen. That's right, there's no longer the need to use a separate dialog box simply to rename a layer. When you're finished naming the layer press the Enter key to apply the name change. For those of you who have now become accustomed to accessing the Layer Styles dialog box by double clicking on a layer, simply add the Option (Mac)/ Alt (Win) key and double click on the layer. Finally, if you're one of those organized types and love to color code your layers, then control (Mac)/ right mouse (Win) in the layer and select "Layer Properties" from the context sensitive menu to rename a layer and choose a color at the same time. Of course, being Adobe, we had to take it one step further: any palette you can list by name (such as snapshots in the History palette, styles in the Styles palette, Swatches, etc.) are editable! Let that sink in for a second... All you have to do is set the palette to view by list. Okay, that one's not subtle, it's huge. You'd better sit down. There's more...

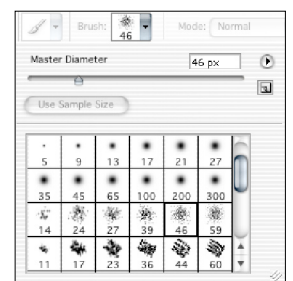


**The Brushes Palette** Those mourning the loss of the Brushes palette in Photoshop 6.0 will rejoice at its return. In fact, it's back bigger and better than ever in Photoshop 7.0. Not only does it have a separate palette, but there are now a multitude of attributes that can be assigned to a brush including such features as independent brush tips, color and shape dynamics, airbrush options etc.. And, all of these attributes have additional options associated with them. Can you say "outrageously customizable"! Even so, if you want to hide these new options from the pop out menu on the Brushes palette, uncheck the expanded view. Voila, you're back to the old 5.5 brushes palette.

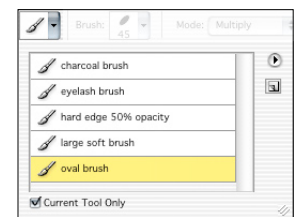
In addition, we've improved the functionality of the Brush Presets palette by adding a master diameter slider to determine brush size (this includes the ability to increase or decrease the master size for custom defined brushes), increased the maximum brush size to 2500 pixels, and added the ability to view each brush with a stroke preview. And to be sure that we covered all our bases, we left the Brush presets palette as context sensitive {control (Mac)/ right mouse (Win)} so that everyone would be happy.



The Brushes Palette



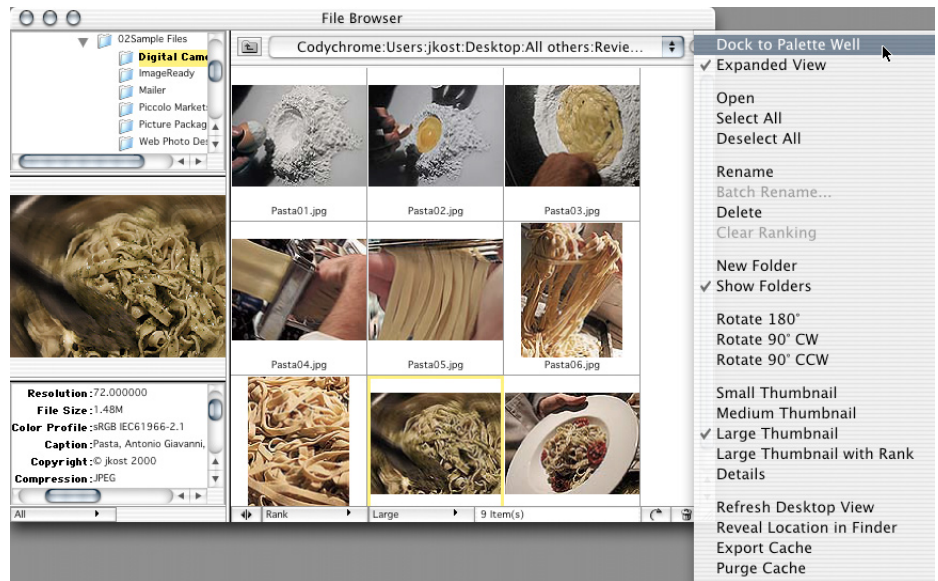
The Brush Presets Palette



The Tool Presets Palette

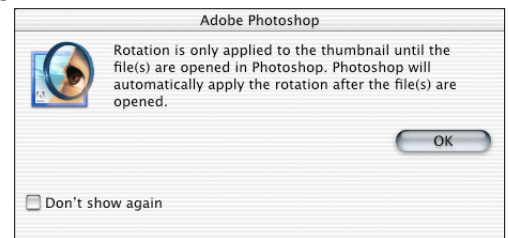
But we weren't sure that these changes would be enough, so we added tool presets, enabling all of the options in the options bar (as well as the foreground color) to be saved with any brush as a Tool preset. But more on that later, tool presets need a paragraph of their own!

**Docking the File Browser** This one stumped me for a while. Although the File browser is in the Palette Well by default (on monitors which can display greater than 800x600 pixels) it can be removed from the palette well just like any other palette so that it can be displayed at all times. However, when you try to re-dock it into the Palette well, you'll notice that it doesn't have a tab like the rest of the palettes for you to click and drag to "re-group" it. Instead, you'll need to use the small black arrow in the upper right corner of the File Browser to access the fly out menu and select "Dock to palette well". This will place the File Browser in the palette well where it will continue to act like any other palette – revealing its contents when clicked on, and hiding when not needed. FYI, the "Dock to palette well" pop out menu option is now available for the other palettes as well.

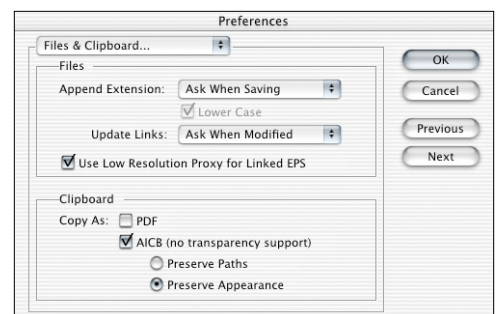


**Batch Ranking** While we're still on the topic of the file browser, I knew that there must be a way to rank or "tag" more than one image at a time. Certainly we can't expect you to tab through each file when you have hundreds of them!!! But alas, when I checked the menus, there didn't seem to be any way to accomplish this. The secret? Well, this option is only available using the context sensitive menus. To batch rank, select the files that you want (by clicking on one, then shift-clicking to add others that are contiguous, or use Command (Mac)/ Control (Win) for adding discontinuous images) Then, Control (Mac)/ right mouse (Win) click in one of the image thumbnails. From the context sensitive list, choose one of the rankings (A, B, C, D, or E). I know that it seems like a limited list, but remember, the batch rank sorts files alphabetically so keep that in mind when ranking files.

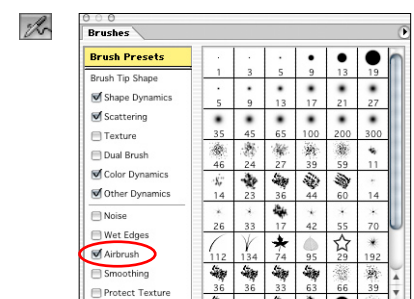
One last item while we're talking about the file browser, if you rotate an image an alert message appears. The easiest thing to do here is simply turn it off by checking the Don't show again box, however I actually like to understand these types of alerts so here's what I discovered it means. When you choose to rotate the preview in the File Browser, that's all it's doing – changing the preview. This option doesn't change the file on your hard drive until you open the file in Photoshop, it rotates it (automatically) and then you choose to save the (now rotated) file. This is a good thing, I get the benefit of previewing the rotation, but I don't want Photoshop messing with my files until I say so!



**Copy and Pasting Paths** In Photoshop 6.0 I loved the new option to paste either as paths, a shape layer, or pixels when moving back and forth between Photoshop and Illustrator. However, when I tried this in Photoshop 7.0, I didn't get the options and instead, it appeared as if I had used the place command. What happened? Well, it's actually not a modification in Photoshop, it's a change that was made to Illustrator 10 and I just hadn't noticed it before I upgraded to Photoshop 7.0. You see, by default, Illustrator 10 copies and pastes using the Adobe PDF format. More than likely, this is not what you're looking for if you're trying to maintain the vector shapes! To force Illustrator to retain the paths, you'll need to modify Illustrator's Preferences. In Illustrator, go to the "Files and Clipboard" preferences and, in the clipboard area, select copy as "AICB".

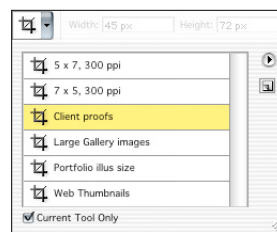


**The Missing Airbrush** I remember the panic I felt in Photoshop 6. I needed the line tool, and I needed it in a hurry – arrowheads and all but I couldn't find it and didn't have the foresight to look in the shape tools. Finally, I figured it out, but it took too many minutes to do so. Well, I had that same feeling when I went to look for the Airbrush in Photoshop 7.0. Only this time it wasn't nested with any of the other tools. I could feel the panic growing. Thankfully, I had the sense to look in the new Brushes palette and there it was. Yes, in Photoshop 7.0 ANY brush tool (including the History and Stamp Tools) can now include the Airbrush attribute simply by either checking the option in the Options bar or by selecting "Airbrush" on the Brushes palette.

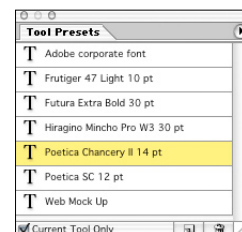


New and improved options for pressure sensitive devices can also be found in the Brushes palette as well including support for pen pressure, tilt and the airbrush wheel. Whew! That was a close one!

**Tool Presets** Oh yeah, the beauty of tool presets. I've been waiting for this for this feature for a long time and I'm sure that you have too (even if you didn't know it!) Do you have multiple setting for tools that you are constantly entering in the options bar? Perhaps your workflow demands cropping images to certain aspect ratios, or perhaps you have your own custom setting for the dodge and burn tools or certain logos that you've defined as shapes at specific sizes that you use all of the time. In Photoshop 7.0, you only have to set up the options for your tools once, then click on the tool presets icon (in the upper left of the options bar)



The Tool Presets picker

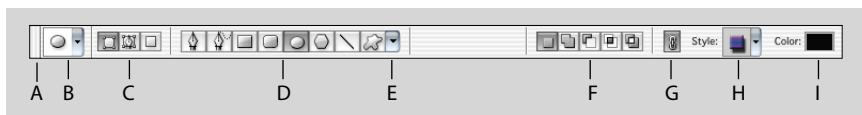


The Tool Presets Palette

and save the preset to instantly create a customized set of tools which can be accessed at any time. Not only can the tool presets be accessed from the Options bar, they can also be accessed from their own Tool Presets palette. From either location you have the choice to view the presets for the currently selected tool, or for all of the tools. But wait, let's think about the implications of this, if I can set tool presets for any tool, then that means that you can choose any options for the Type tool (from the options bar and/or the paragraph and character palette) and save them as a tool preset. Too Cool! You can now create your own paragraph and character styles in Photoshop! Not only that, I can then save out sets of tool presets as libraries, use the presets manager to organize them and share them with coworkers and friends. And speaking of libraries and the preset manager, you can now re-order any of the items in a palette (brushes, swatches, etc.) by simply dragging them to a new place in the presets manager! Hello? Did you hear that? Ever want to change the order of your brushes? And one last thing for those of you who teach Photoshop or work in a shared or multi-user environment, if you Control (Mac)/ right mouse (win) click on the tool presets icon in the Options bar you can choose to reset the current tool or all of the tools to their default settings. An easy way to get back to a standard starting point with your tools when other people have reset them! I can't begin to tell you how much time Tool presets have saved me.

**Transforming with Handles** Well, by this time, if you use the free transform feature as much as I have in Photoshop 6.0, you're probably use to zooming out a lot, or using the width and height options in the Options bar to resize those really large layers that extend outside of the visible image area. Fortunately, we no longer have to do that! In Photoshop 7.0, when you transform an image (even if it's larger than the visible image area), the transformation handles remain visible at the edge of the visible image area. Need I say more?

**Vector Shapes Made Easy** I know that I wasn't the only one that was confused by some of the behaviors of vector shapes in Photoshop 6.0. Well, Photoshop 7.0 has made their behavior much simpler and consistent with other tools such as the marquee and other selection tools. Additional options for the Shape tools have been added to the

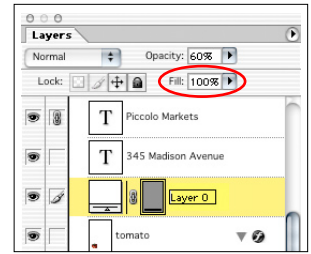


**A.** Click and drag to reposition the Options bar **B.** Click to access the Tool presets picker **C.** Create shape layers, paths or filled pixel areas **D.** Choose a pen or shape tool **E.** Click to access specific shape tool options (geometry) **F.** Choose to add to, subtract from, intersect with or exclude multiple shapes **G.** Link the shape layer with the style **H.** Apply a style from the styles palette **I.** Assign a color to the shape layer

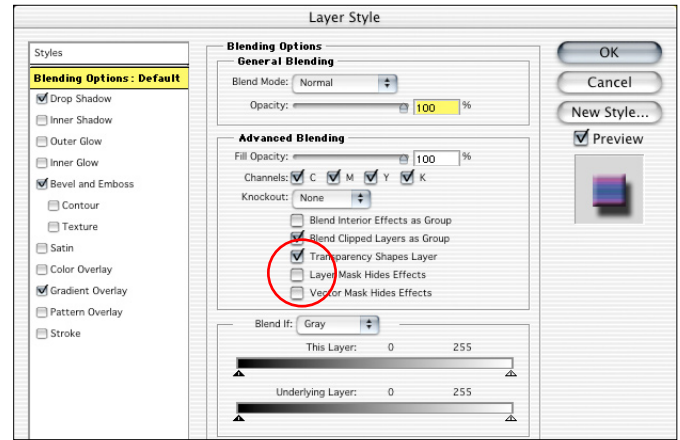
Options bar in Photoshop 7.0. These options include the ability to create new shape layer, add to, subtract from, intersect and exclude overlapping shape areas. Although these options were available in Photoshop 6.0, you had to have the tool in the correct "state" to access them. This is no longer true, the options remain available as long as you have the tool in Photoshop 7.0. In addition, the create new shape layer icon is selected by default so that Photoshop 7.0 will automatically create a new shape layer instead of adding the shape to the original layer as it did in the past. Of course, if you want to add a shape to a layer (or subtract from, intersect and exclude overlapping shapes) simply click on the appropriate icon in the options bar and proceed! This is huge. The shape tools are now your friends. In addition, you can add layer styles and change colors of shape layers at any time. The link icon on the options bar determines whether you're changing the effects on the currently selected shape layer or if you want to apply it to the next shape layer created. This allows for additional flexibility when creating shape layers with styles while targeting a shape layer. And, of course, you still have the option to draw either a shape layer, a path or a filled bitmapped region with each of the shape tools.

**Layer Clipping Masks / Vector Masks** While we're still thinking of the shape tools, let's make the transition to layer clipping masks. It should be a fairly easy one since shape layers are essentially color fill layers with layer clipping paths defining what area on the layer is visible. You remember those newly introduced masks in Photoshop 6.0 right? They're hard-edged, vector-based, and print out at the resolution of your Postscript printer. Well they still look the same, act the same and print the same, but they've been renamed to Vector Masks. Makes sense, since that's what they are. Simplify, simplify, simplify!

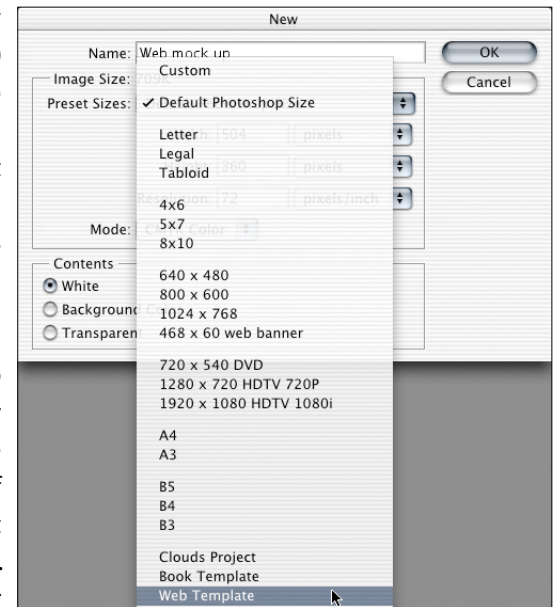
**The Layers Palette** The Fill opacity command in the advanced blending area of the Layer Styles dialog box was so popular in Photoshop 6.0, we decided to make it more easily accessible by including it on the Layers palette in Photoshop 7.0. The Fill opacity command differs from the Layer opacity in that it only affects the inner contents of the layer. For example, if you assign a layer effect to a layer, and decrease the opacity of the layer, both the layer and the effect are changed. If, on the other hand, you decrease the Fill opacity of the layer, only the contents of the layer is affected, the layer style applied remains at full opacity.



**Advanced Blending Options** In the Layer Style dialog box, new options for determining how layers are blended together appear. The first new option - Transparency Shapes Layer is on by default. It determines whether the layer style is applied to the content on the layer or if it is applied to the entire layer regardless of the content (it determines content as non transparent pixels). To have effects behave the same as in previous version of Photoshop, leave this option checked. The next two options Layer Mask Hides Effects and Vector Mask Hides Effects determines if the layer style is applied to the layer and then the mask is applied (checked) or, if the mask is applied and then the layer style is added (unchecked). Try them both, you'll quickly see the difference.

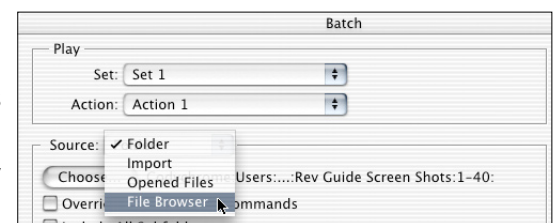


**Creating New File Presets** In addition to being able to choose from a new selection of predefined new Document sizes, you have the ability in Photoshop 7.0 to create your own. To create your own, navigate to the Presets folder in Photoshop 7.0, open the New Doc Sizes.txt file and follow the instructions to add custom sizes. When finished making your edits, save the New Doc Sizes.txt back as a text file. Your new presets will appear at the bottom of the pre-defined (built in) list. In addition, you can set a New Document Preset Resolution in the Units and Rulers preferences for either Print or Screen work.



**Saving Files** When saving multi-layered files in Photoshop 7.0 you might notice an increase in file size. This is due to the fact that by default, Photoshop saves files to maximize compatibility with other applications. By doing so, it becomes necessary to not only save the layered version, but also a flattened version within the same file to be made accessible to other applications. Unfortunately this means that if you open a large file and then do something as simple as adding an adjustment or type layer to it, and re-save it, there could be a significant increase in file size. The solution, simply turn off the option to Always Maximize Compatibility for Photoshop (PSD) files in the File Handling preferences dialog box. There have been additional options included for the TIFF file format. Also in the File Handling preferences dialog box is the option to Ask Before Saving Layered TIFF Files. Turn on this option to have Photoshop allow for advanced options such as layer compression when saving a layered tiff file. You can also save files with additional security when saving as a Photoshop PDF file. In the PDF Options dialog box, select the PDF Security options, click on the Security Settings button and assign the necessary restrictions on the file such as passwords and encryption levels. Finally, though technically not saving a file, you have the ability to export the cache from the File Browser as a file. If you are archiving files to a CD or DVD, this exported cache can accompany the images and, when the CD is accessed at a later time, the File Browser accesses the saved cache file, instantly propagating the File Browser with the necessary thumbnails, ranking and rotation information.

**Automation** When running an action (a series of prerecorded commands) on multiple files, the File Browser can now be chosen as a "source" in the Batch dialog box. If you have rotated files in the File Browser, when the batch command opens the files to run the action, it will automatically rotate them, eliminating the need to include recording the rotation step in an action. This is especially useful if only a select number of images in the folder need to be rotated.



**Preferences** A handful of embellishments have been made to the Preferences in Photoshop 7.0. For example, we automatically use smart quotes. To turn this off, uncheck the option in the General preferences. If you Enable Workgroup Functionality (in the File Handling preferences), you can determine Photoshop's default behavior when checking out files or updating them from a server. You can modify both the color of slices as well as whether or not the slice numbers are visible in the Guides, Grid & Slices preferences and finally, customize the amount of memory assigned to Photoshop in the Memory & Image Cache preferences.

**I can name that great feature in one sentence...**

The eyedropper can now sample colors from outside of Photoshop.

The forward slash key toggles on and off the shields in the crop tool.

You can fade the opacity and blend mode of the Healing brush by immediately selecting Edit > Fade Healing Brush after painting.

You can add a relative amount to a canvas by selecting in Image > Canvas Size.

Using the Healing brush with the blending mode set to Replace makes it behave more like the Clone Stamp tool (in that it doesn't automatically try to blend the source and destination), and blends noise more effectively while cloning.